

GREAT NORTHWEST

- Mountain Goats B6
- Black Bears B6
- Bobcats B7
- Bald Eagles A7
- River Otters A6
- Beavers B6
- Waterfowl B6
- Cougars B5
- Condors B5
- Goats B5

PACIFIC SHORES

- Harbor Seals C5
- Penguins C4
- Sea Otters C5

PRIMATE FOREST

- Chimpanzees C3

ELEPHANT LANDS

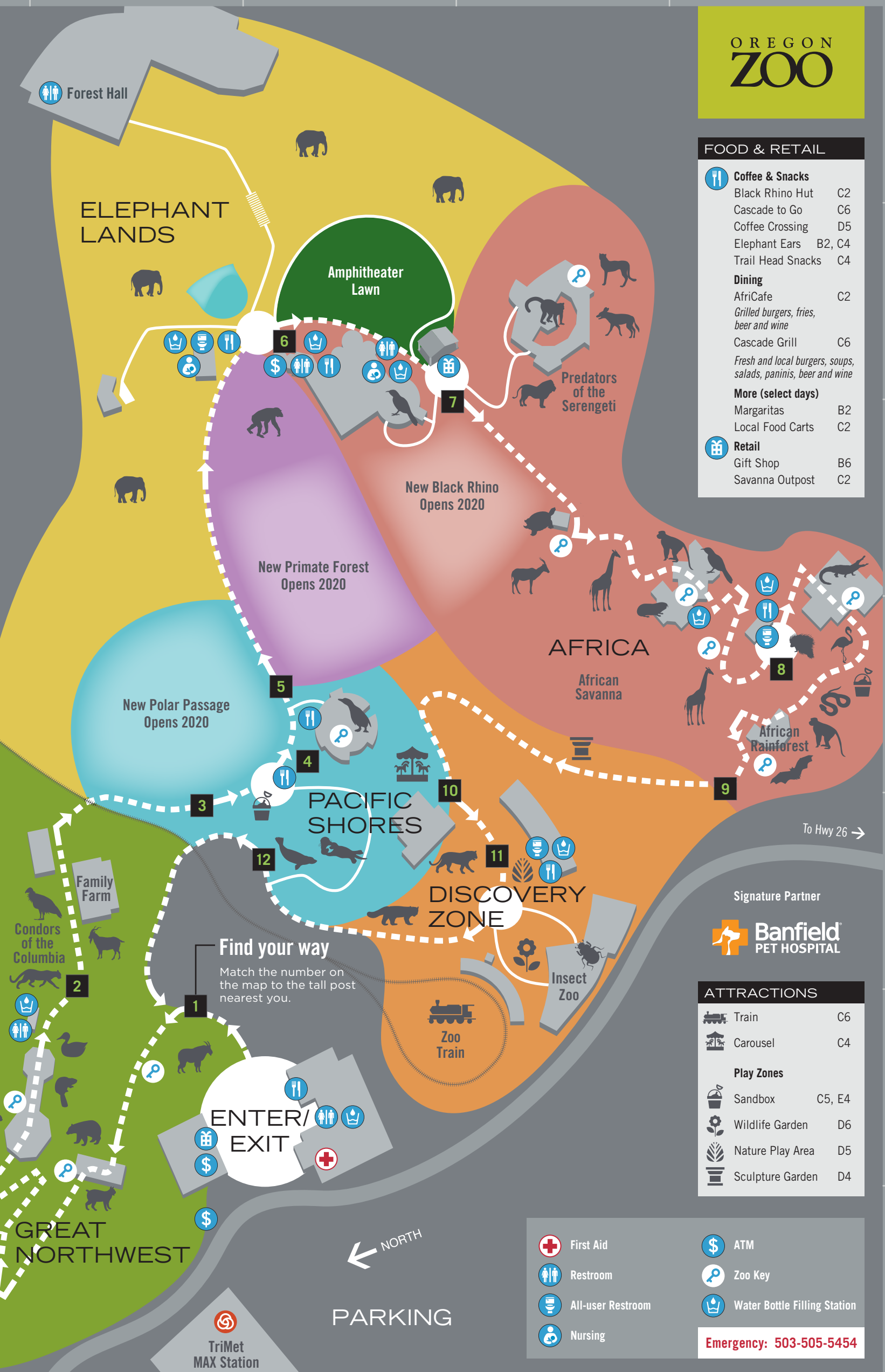
- Asian Elephants B2

AFRICA

- Lions D2
- Lemurs D2
- Painted Dogs D2
- Cheetahs D2
- Aviary C3, E3
- Tortoises D3
- Bonteboks D3
- Giraffes D3
- Naked Mole Rats D4
- Monkeys E3, E4
- Porcupines E4
- Crocodiles E3
- Flamingos E4
- Pythons E4
- Fruit Bats E4

DISCOVERY ZONE

- Tigers D5
- Insect Zoo D5
- Red Pandas C5



FOOD & RETAIL

- Coffee & Snacks**
- Black Rhino Hut C2
- Cascade to Go C6
- Coffee Crossing D5
- Elephant Ears B2, C4
- Trail Head Snacks C4
- Dining**
- AfriCafe C2
- Grilled burgers, fries, beer and wine*
- Cascade Grill C6
- Fresh and local burgers, soups, salads, paninis, beer and wine*
- More (select days)**
- Margaritas B2
- Local Food Carts C2
- Retail**
- Gift Shop B6
- Savanna Outpost C2

To Hwy 26 →

Signature Partner



ATTRACTIONS

- Train C6
- Carousel C4
- Play Zones**
- Sandbox C5, E4
- Wildlife Garden D6
- Nature Play Area D5
- Sculpture Garden D4

Find your way
Match the number on the map to the tall post nearest you.

ENTER/EXIT

PARKING

TriMet
MAX Station

- First Aid
- ATM
- Restroom
- Zoo Key
- All-user Restroom
- Water Bottle Filling Station
- Nursing

Emergency: 503-505-5454